

Resolution
from
Governing
Body

RESOLUTION 20-0803-206

AUTHORIZING THE BOROUGH OF SOMERVILLE IN COOPERATION WITH THE DOWNTOWN SOMERVILLE ALLIANCE, INC., TO SUBMIT AN APPLICATION FOR HIGHWAY OCCUPANCY TO THE NEW JERSEY DEPARTMENT OF TRANSPORTATION FOR THE INSTALLATION OF PARKLETS ON ROUTE 28 (MAIN STREET PORTION)

WHEREAS, a portion of East Main Street and a portion of West Main Street is located on Route 28, a New Jersey State Highway; and

WHEREAS, the Borough of Somerville has a Special Improvement District that is managed by the Downtown Somerville Alliance, Inc.; and

WHEREAS, the Borough of Somerville in cooperation with the Downtown Somerville Alliance, Inc., desires to place parklets in certain areas on Route 28 for the purpose of outdoor dining; and

WHEREAS, the Borough of Somerville authorizes the submission of an application for Highway Occupancy to the State of New Jersey Department of Transportation for the purpose of placing parklets on Route 28; and

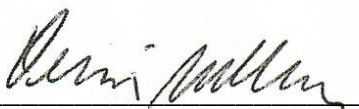
WHEREAS, the Borough of Somerville authorizes Kevin Sluka, Borough Administrator to complete the necessary paperwork, including the Application for Highway Occupancy along with Natalie Pineiro, Executive Director of the Downtown Somerville Alliance; and

WHEREAS, the State of New Jersey has advised the Borough of Somerville THAT approvals issued will have an expiration date as part of its approval; and

WHEREAS, the Borough of Somerville further authorizes Kevin Sluka and Natalie Pineiro to requests all future extensions as they deem necessary and appropriate.

BE IT RESOLVED, by the Borough Council of the Borough of Somerville, in the County of Somerset, State of New Jersey authorizes the Borough of Somerville to submit an application for Highway occupancy to the New Jersey Department of Transportation for installation of parklets in certain areas on Route 28 for the purpose of outside dining.

Adopted by Borough Council August 3, 2020



Mayor



Clerk/Administrator

I, Kevin Sluka, Borough Clerk of the Borough of Somerville, County of Somerset, State of New Jersey, hereby certify this to be a true copy of a resolution adopted by the Borough Council on August 3, 2020.



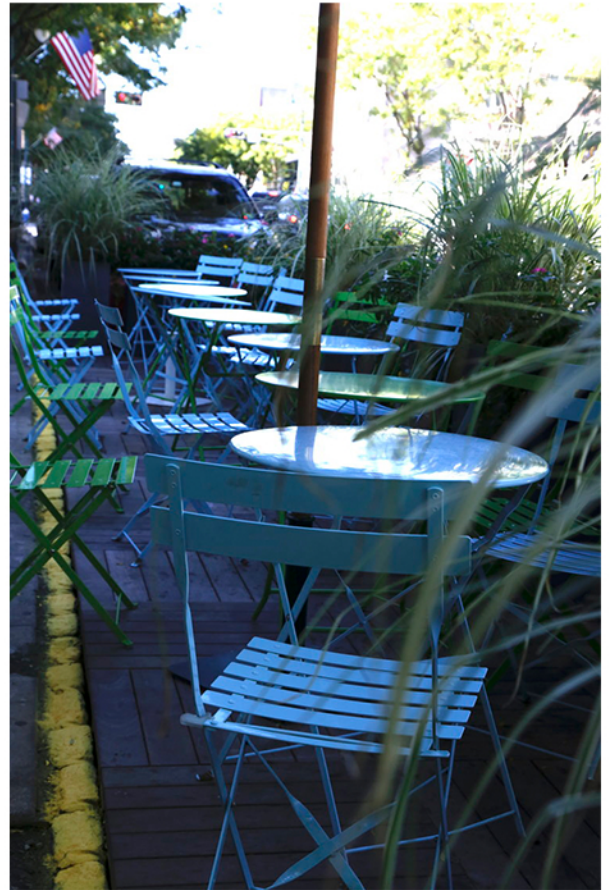
Kevin Sluka, Clerk/Administrator

Concept Photos

BARRIER WALL

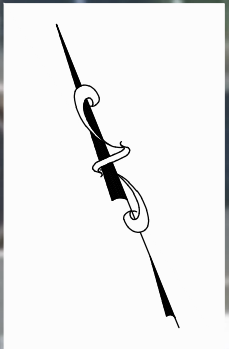


FLOORING/FURNISHINGS

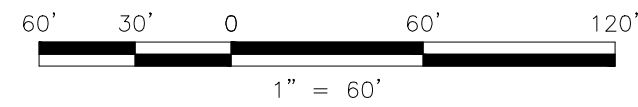


Engineered Parklet Plan

(including, location,
measurements, cross streets
and mileposts)



MATCHLINE - A

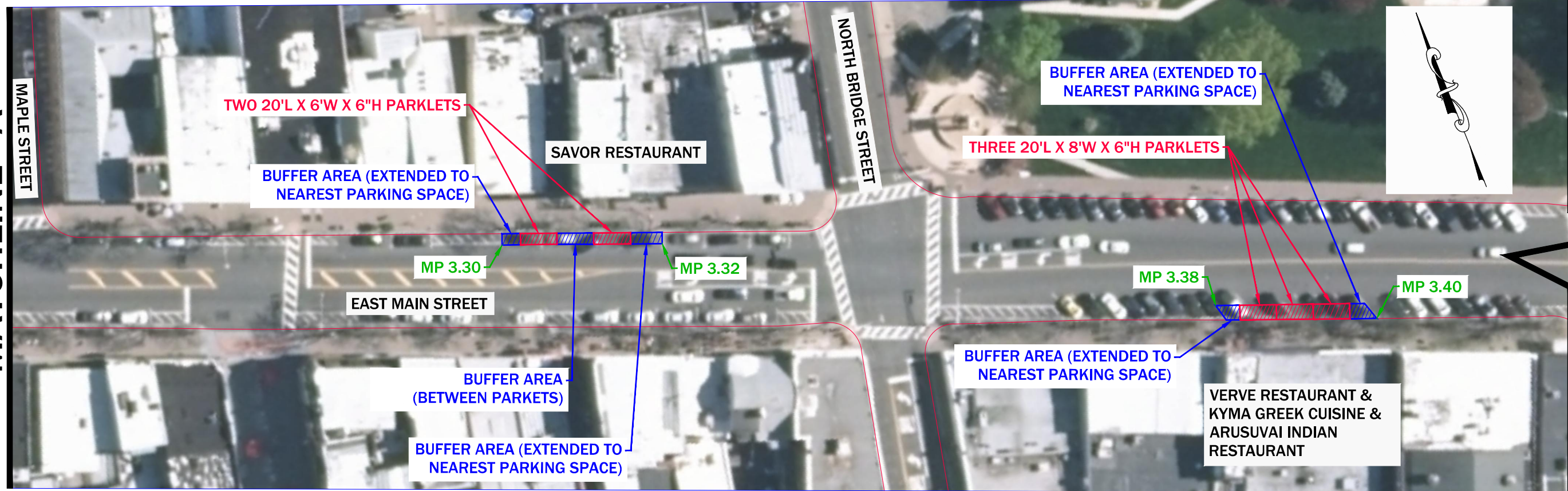


11 TINDALL ROAD
MIDDLETOWN, NJ 07748
TEL 732-671-6400
FAX 732-671-7365
www.tandmassociates.com

**MAIN STREET
PARKLET PLAN**

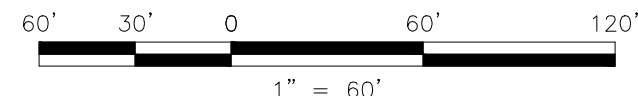
SOMERVILLE BOROUGH, SOMERSET COUNTY

MATCHLINE - A



BREAK LINE - A

BREAK LINE - A



11 TINDALL ROAD
MIDDLETOWN, NJ 07748
TEL 732-671-6400
FAX 732-671-7365
www.tandmassociates.com

MAIN STREET PARKLET PLAN

SOMERVILLE BOROUGH, SOMERSET COUNTY

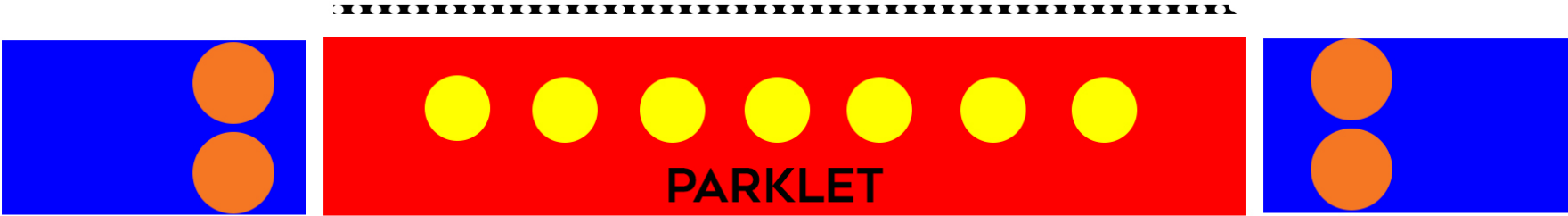
Safety Materials

STREET

1/2 PARKING
SPOT
BUFFER

REFLECTIVE BARRIER

1/2 PARKING
SPOT
BUFFER





LAKESIDE
PLASTICS, INC

